

How Lao PDR is incorporating climate resilient design measures to protect the school from the impact of disasters



Souphap KHOUNVIXAY

Deputy Permanent Secretary, Permanent Secretary Office
Ministry of Education and Sports, Lao PDR

Risk Mapping of Six Prioritized Risks

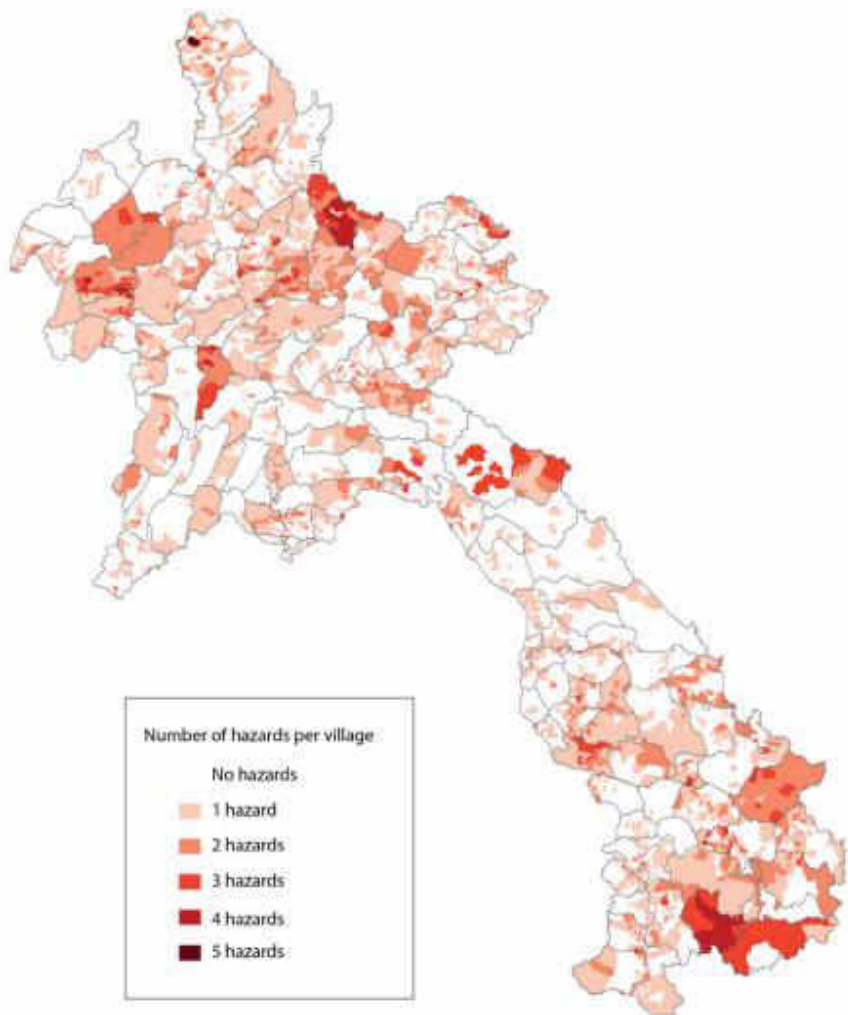
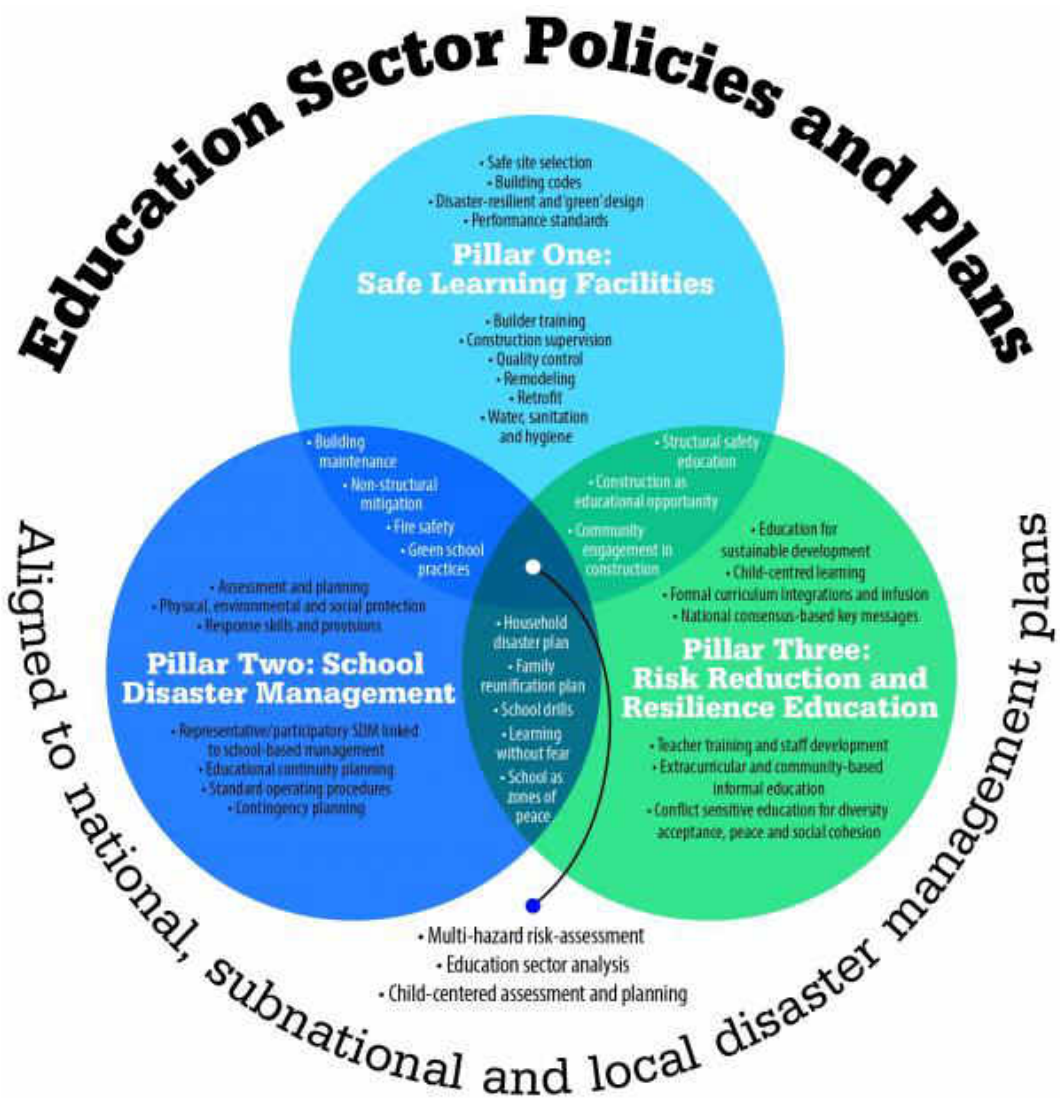


Figure 2. Multihazard Map.
Source: UN-Habitat Lao PDR

5. Critical	Drought	Landslides	Floods
4. Severe		Storms & Typhoons	Epidemic (e.g. Dengue, COVID-19)
3. Moderate			Malnutrition
2. Minor			
1. Negligible			
	Less likely	Moderately Likely	Very likely

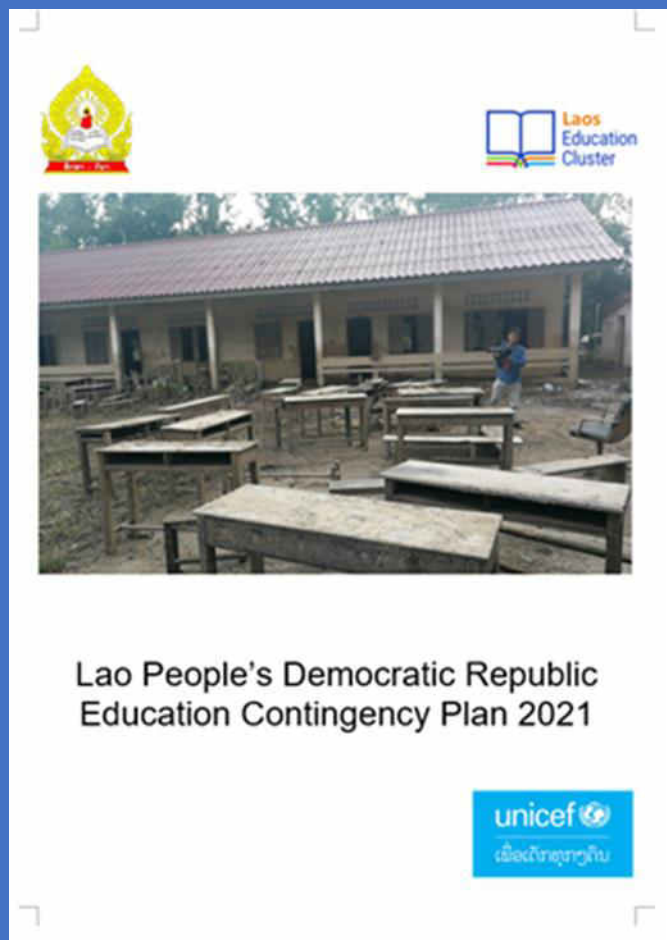




1. To save lives and prevent injuries of children and education personnel (esp. at school)
2. To plan for educational continuity / Minimize educational disruption
3. To protect investments in education
4. To develop a culture of safety / develop a resilient citizenry able to reduce the social, economic, and cultural impacts of recurring hazards.



- Integration of Climate Change Content in Supplementary Learning Materials and Extra Curricular in Primary and Secondary Education.
- Applying ASEAN School Safety Framework- 3 pillars based.
- Capacity Building PESS, DESB, School Principal and Teacher on Education Contingency Plan.
- Utilizing the School Safety Self Assessment Survey (SSSAS) program as a digital toolset for planning and decision making of School Based.



SCHOOL-BASED SELF-ASSESSMENT

2. CSS SSA SCHOOL REPORT



Fictitious Prima SCHOOL SAFETY SELF-ASSESSMENT

SCHOOL ID: 325523
DATE: 08.12.2015

LOCATION
Province: Here
District: There
Village/City: Nowh

PEOPLE
Students: 530
Teachers: 2

SITE
Urban Secure Unstable Unsafe access
Outreach to with disabili

HAZARDS
Fire Water Wind Earthquake Landslide Heal

Average weeks per year school is inaccessible to students (e.g. Max height of flood water inside any current school buildings:

HAZARD IMPACTS

Most recent disasters	Type
2012	Earthquake
2003	Earthquake
1999	Earthquake

PILLAR 1: SAFE LEARNING

BUILDINGS: 3 # TO

BUILDING DETAILS

Name	# Classrooms	# Floors	Structure Type	Roof materials	Condition
Bldg A	3	1	Concrete	Asphalt	Good
Bldg B	3	1	Concrete	Asphalt	Fair
Bldg C	3	1	Concrete	Asphalt	Poor

SCHOOL MAINTENANCE: Frequent

PHOTOS OF DAMAGE, DANGERS OR HAZARDS

PILLAR 2: SCHOOL DISASTER

SERVICES
Early warning, Fire Suppression, Access, Playground, Electricity, Ind. Light

WATER AND SANITATION
Boys Toilets: 1, Girls Toilets: 1

ACTIVITIES FOR ALL HAZARDS

Activity	Rating	Notes
School Disaster Management	Fair	A committee, supported by admin ensure plans are reviewed annually
Risk Assessment and Planning	Fair	Identify hazards and capacities, the educational continuity
Risk Reduction and Physical Protection	Poor	Your school - both staff and student your hazards, risks, and the means response.
Emergency Response Skills and Proficiency	Poor	Organize and train staff for emergency available.
Policies and Procedures for Emergencies and Disasters	Poor	Adopt and regularly practice procedure evacuation to safe haven, and first

HAZARD-SPECIFIC RISK REDUCTION ACTIVITIES

Risk	Potential Impact	Possible Measures	Measures Taken	Notes
All Hazards	High	9	2	Hazard-resistant construction as retro many hazards. Identifying safe shelter
Fire	Medium	1	1	Ensure fire break clearances are maintained
Wind	Medium	8	5	Ensure roofs are effectively fastened risk reduction activities for water risk
Water	High	19	12	Monitoring, early warning, and well stock supplies can reduce damage. Vegetation, flooding.
Earthquake/Landslide	High	11	8	Fastening building contents reduce injury reduce the likelihood of some landslides to offset.
Heat/Drought	Medium	11	2	Vaccination, hand washing, and good storage and gardens reduces famine
Technological	Medium	4	1	Ensure communities understand and
Conflict	High	2	2	Safety bunkers/trenches and travel resources are limited, conservation of

PILLAR 3: RISK REDUCTION & RESILIENCE EDUCATION

AWARENESS AND ACTION

Actions Taken	Students	Teachers	Procedure	Familiarity	Actions Needed
Aware of hazards	Fair	Good	Safe Evacuation	Fair	Find out what students, staff, and parents know about evacuation, shelter, and reunification procedures.
Understanding of DHR & Response Procedures	Poor	Good	Evacuation to Safe Haven	?	Correct misunderstandings by explaining procedures to all.
Participation in Risk Reduction & Response Preparedness	Good	Poor	Shelter-in-Place	Poor	Regularly drill standard procedures for emergencies and disasters and be sure to include students, staff, and parents in these drills.
Inclusive of young children, boys and girls, and children with disabilities	Fair	Fair	Safe Family Reunification	Good	Especially consider the needs and safety of young children, girls and boys, and with different functional and communication needs (disabilities) in your plans.

RISK REDUCTION AND RESILIENCE EDUCATION

Learning Settings	Teaching & Learning Material	Actions Needed
Regular curriculum	Natural and man-made hazards and risk awareness	Disaster risk reduction and resilience should be integrated into formal curriculum, informal education, and community outreach. Teach hazard awareness and the skills for reducing risk at all ages and for all hazards affecting your community.
Regular curriculum	Risk reduction knowledge, skills and competencies	Disaster risk reduction and resilience should be integrated into formal curriculum, informal education, and community outreach. Teach hazard awareness and the skills for reducing risk at all ages and for all hazards affecting your community.
After-school clubs	Response preparedness skills	Students learn best when they are presented with a consistent message through multiple types of materials and experiential activities.
School Assemblies	Learning to live together	Find additional information from your Provincial Office of Natural Resources and Environment.
	Hygiene promotion	

PHOTOS OF RISK REDUCTION AND RESILIENCE EDUCATION

Reflection from COVID-19 Pandemic and Ways forwards

Lesson Learnt (Key Success)

- Enhancing Collaboration at multilevel and multi-sectors as well as inter-governmental cooperation.
- Strengthening School – Community Disaster Management Committee (Accessing reliable information, warning system, understanding Contingency Management Plan, Drills, and etc.)
- Accountability of Central and Local governmental bodies.

Way forwards

School safety and Climate Resilient should take into account:

- Bullying in schools.
- Any kind of violences.
- Cyber crime coming along with Online Learning
-

